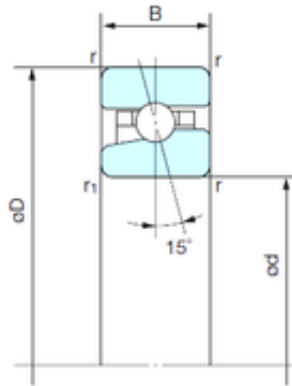




LWB BEARING PRODUCTION CO., LTD.

60 mm x 95 mm x 18 mm NACHI BNH 012
angular contact ball bearings



Bearing No. BNH 012

Size	60x95x18 mm
Bore Diameter	60 mm
Outer Diameter	95 mm
Width	18 mm
d	60 mm
D	95 mm
B	18 mm
C	18 mm
Angle (°)	15 °
r min.	1.1 mm
r1 min.	0.6 mm
Basic dynamic load rating (C)	20,8 kN
Basic static load rating (C0)	21,9 kN
(Grease) Lubrication Speed	16000 r/min

BNH 012 Bearing 2D drawings and 3D CAD models